



r i x e l

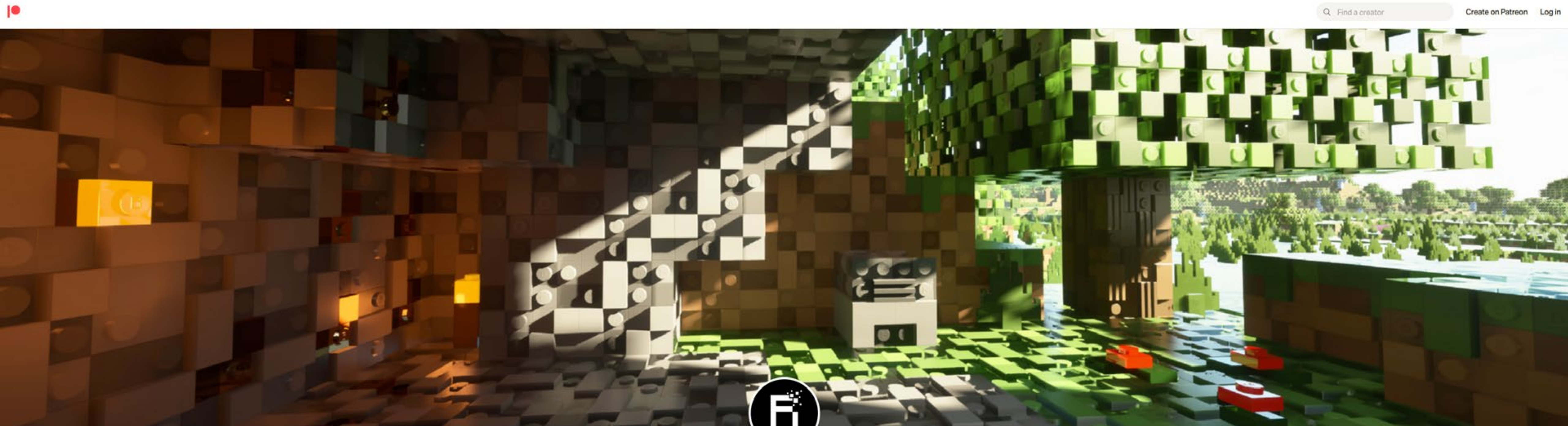
v 2.3

Installation guide - BSL v8.1 SHADER

Minecraft 1.19 Java Edition for Windows

For all steps, links and video timestamps
please click **SHOW MORE**
in the description below

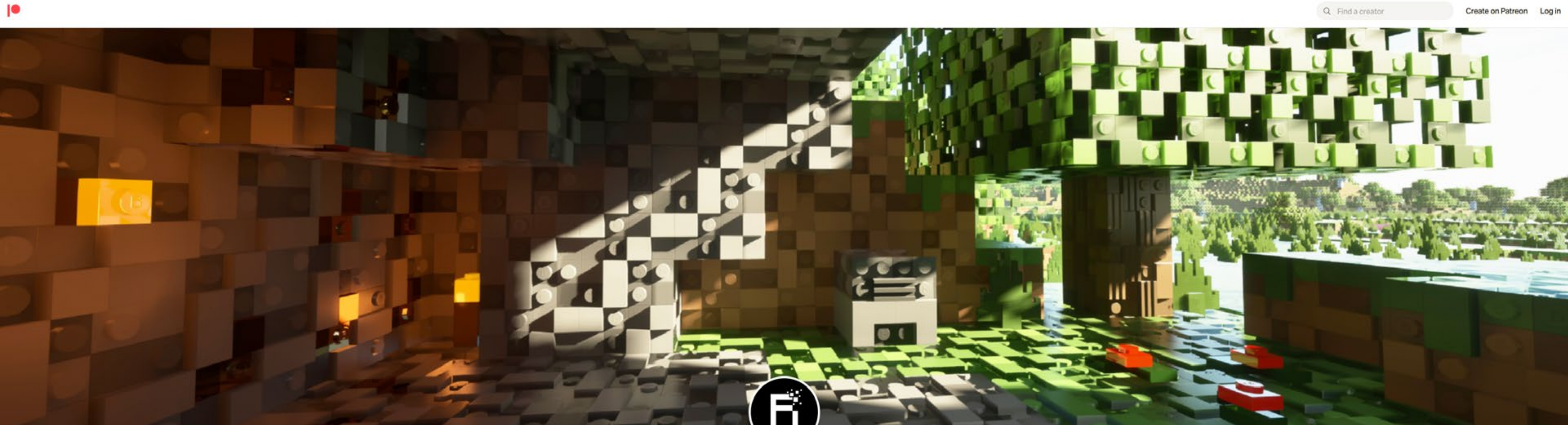




Wabbabrick
is creating Minecraft Resource Pack

Start from visiting our Patreon Page to become a Patron and gain access to Brixe1 Resource Pack for Minecraft Java Edition

For all steps, links and video timestamps please click **SHOW MORE** in the description below.

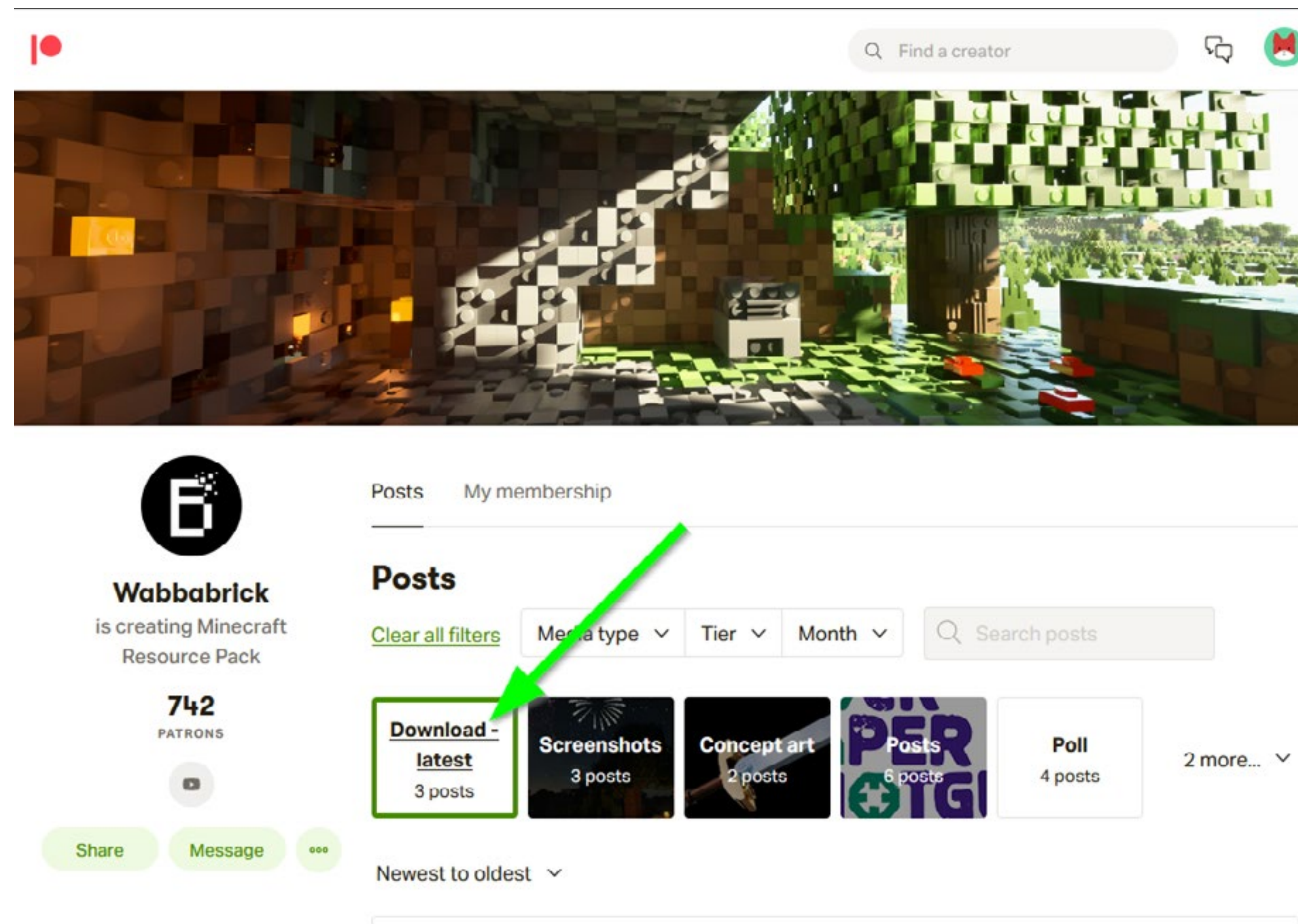


Wabbabrick
is creating Minecraft Resource Pack

<https://www.patreon.com/wabbabrick>

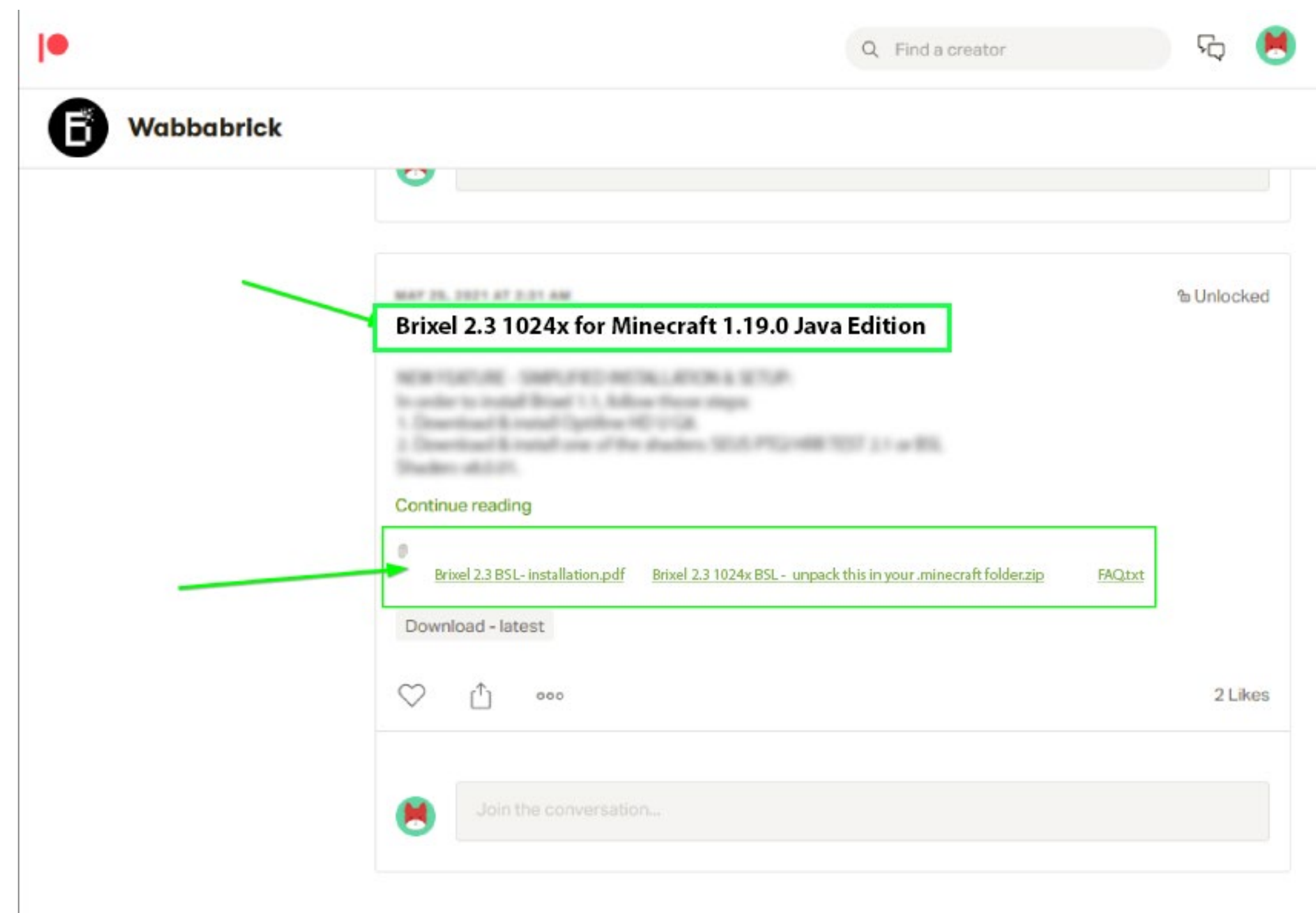
For all steps, links and video timestamps please click **SHOW MORE** in the description below.

After becoming a Patron go to “Download -latest” posts category



For all steps, links and video timestamps please click **SHOW MORE** in the description below.

Download all the files from the latest post with chosen resolution



Please note that the amount of resolution options depend on your Patreon membership level

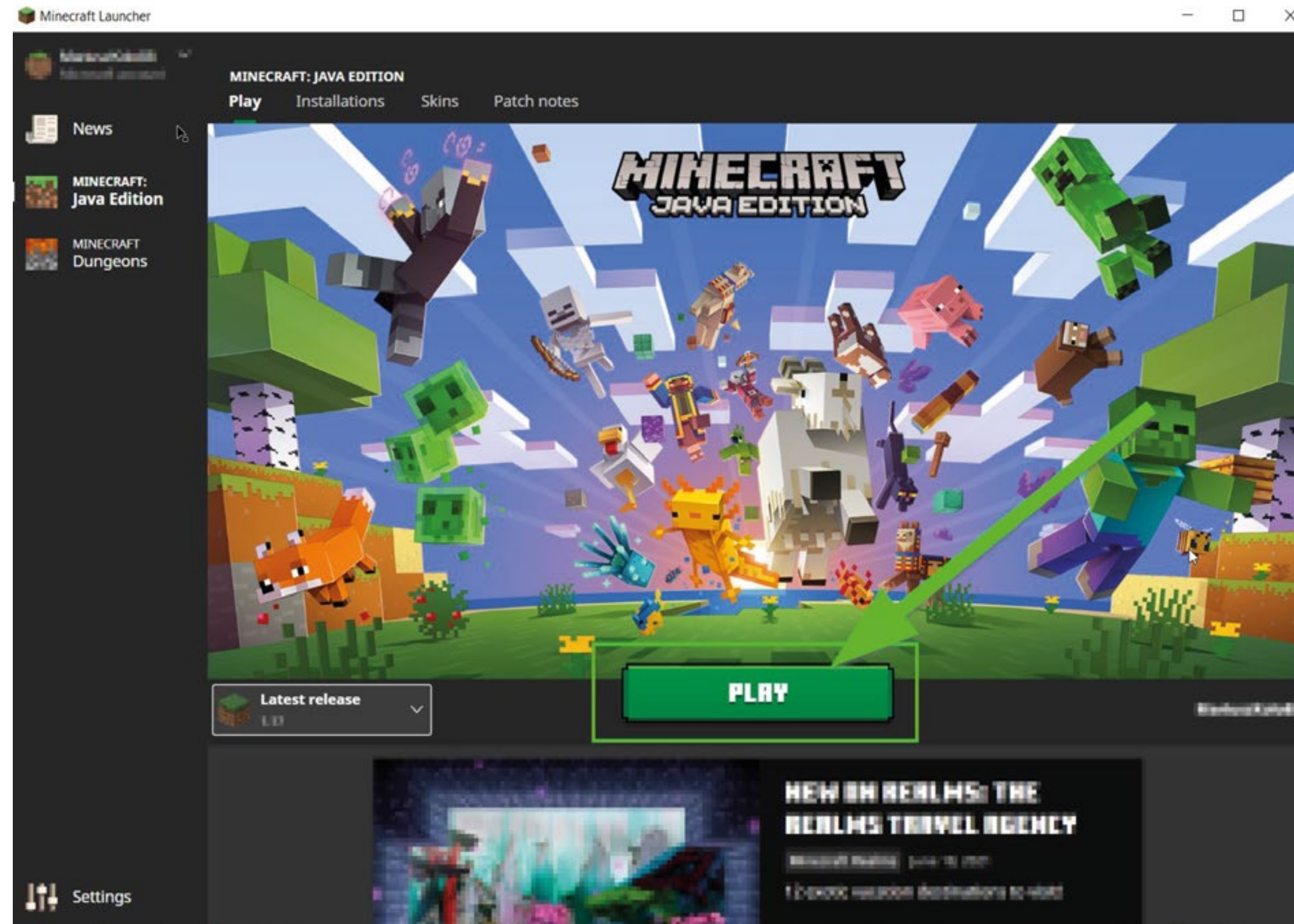
For all steps, links and video timestamps please click **SHOW MORE** in the description below.

Next Step:

**Download and install
Minecraft Java Edition for Windows
from official website**

<https://www.minecraft.net>

Run the game at least once and close it.

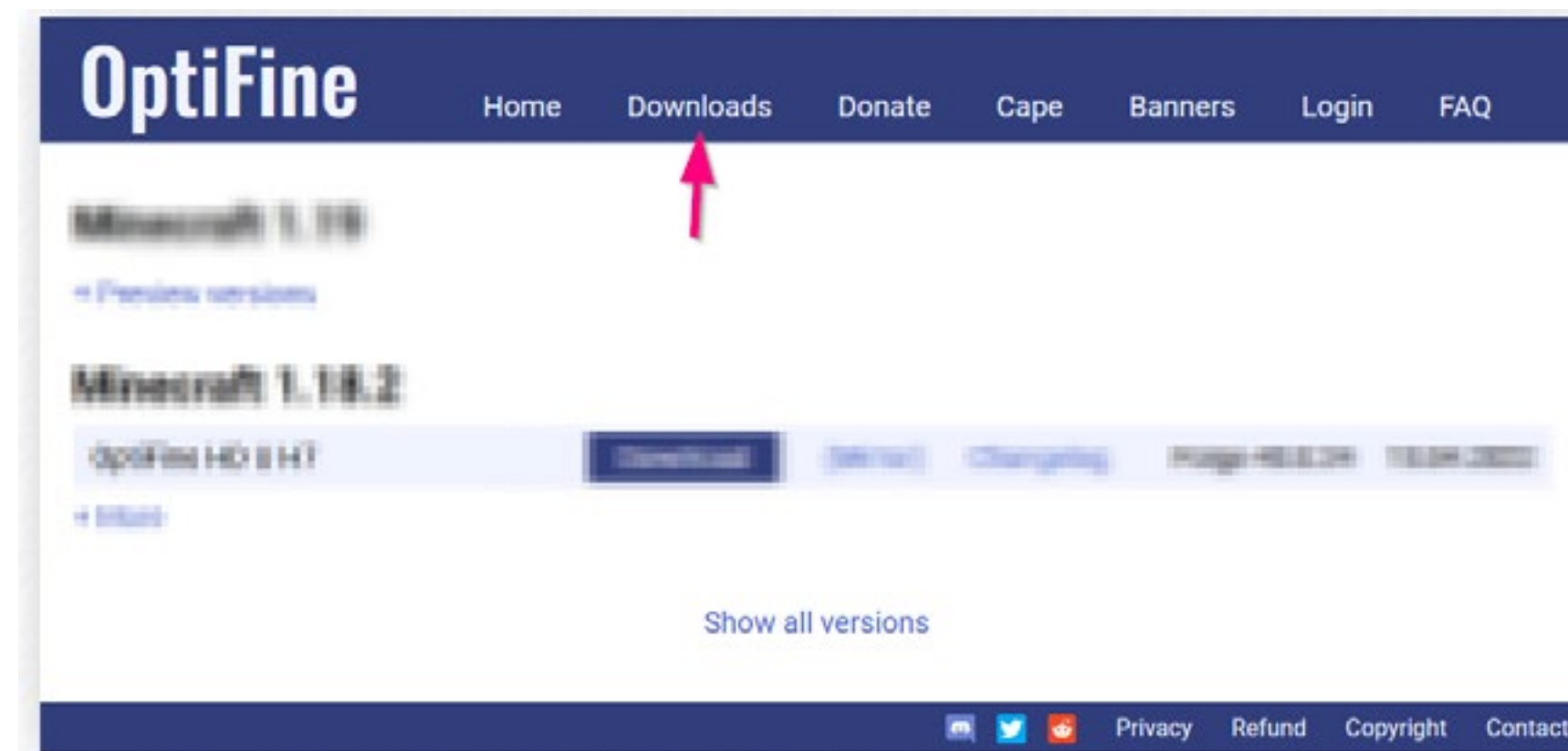


For all steps, links and video timestamps please click **SHOW MORE** in the description below.

Next Step:

**Download and install
Optifine for Minecraft 1.19 HD U H8
in order to be compatible with new Minecraft Launcher**

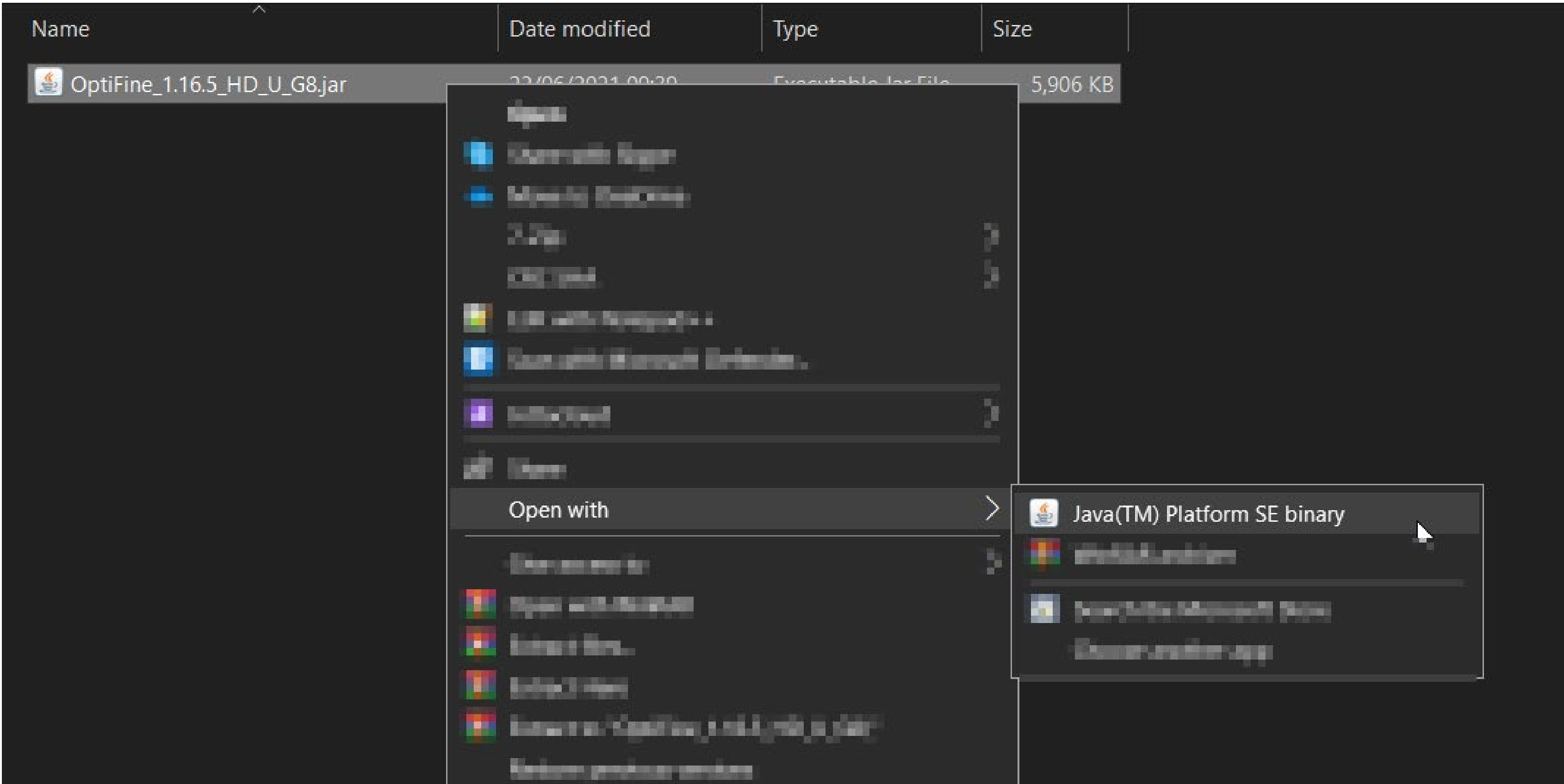
<https://optifine.net/downloads>



Open downloaded

OptiFine_1.19_HD_U_H8.jar file

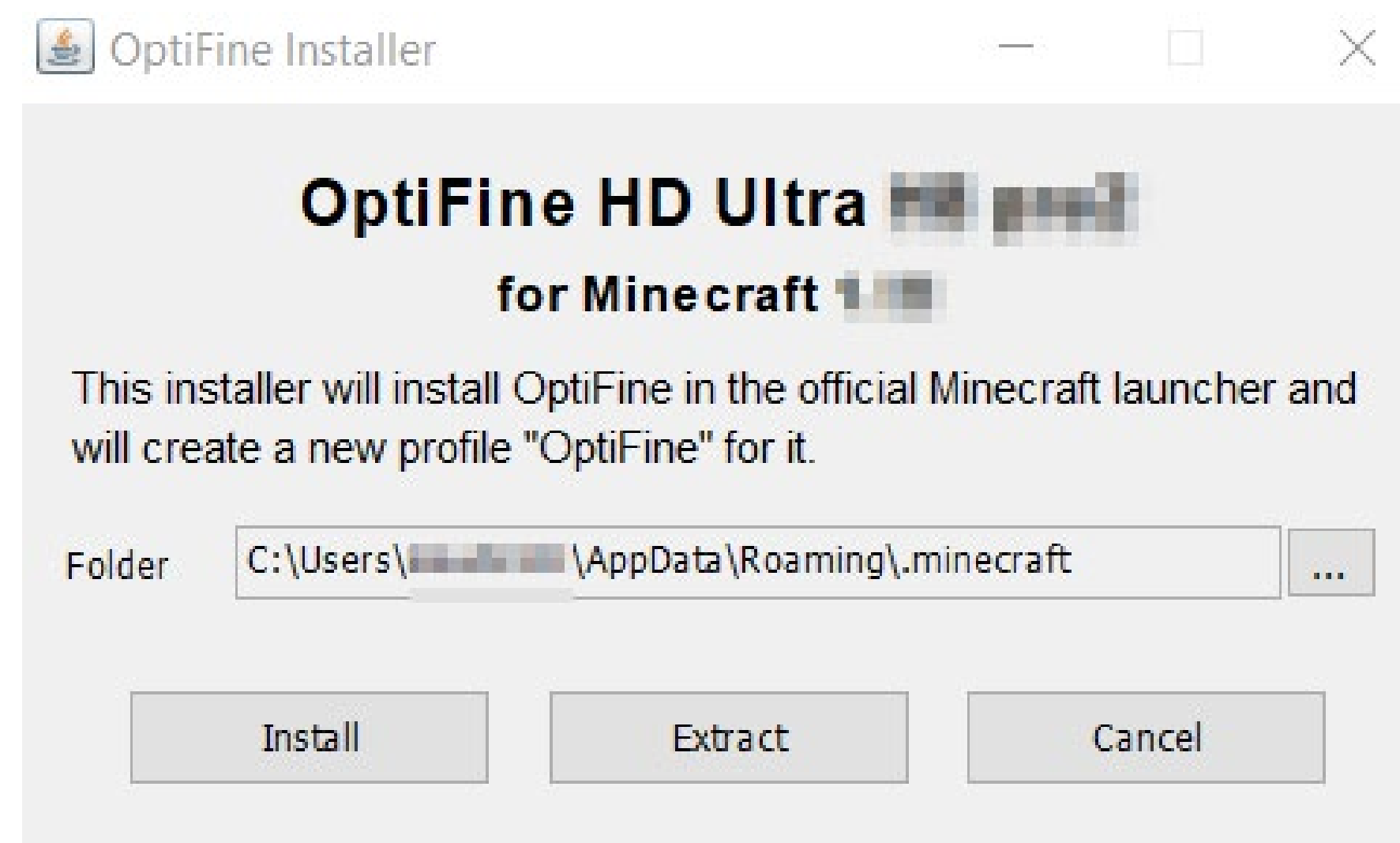
with Java(TM) Platform SE binary



If you don't have it please go to www.java.com and download 64-bit Java for Windows

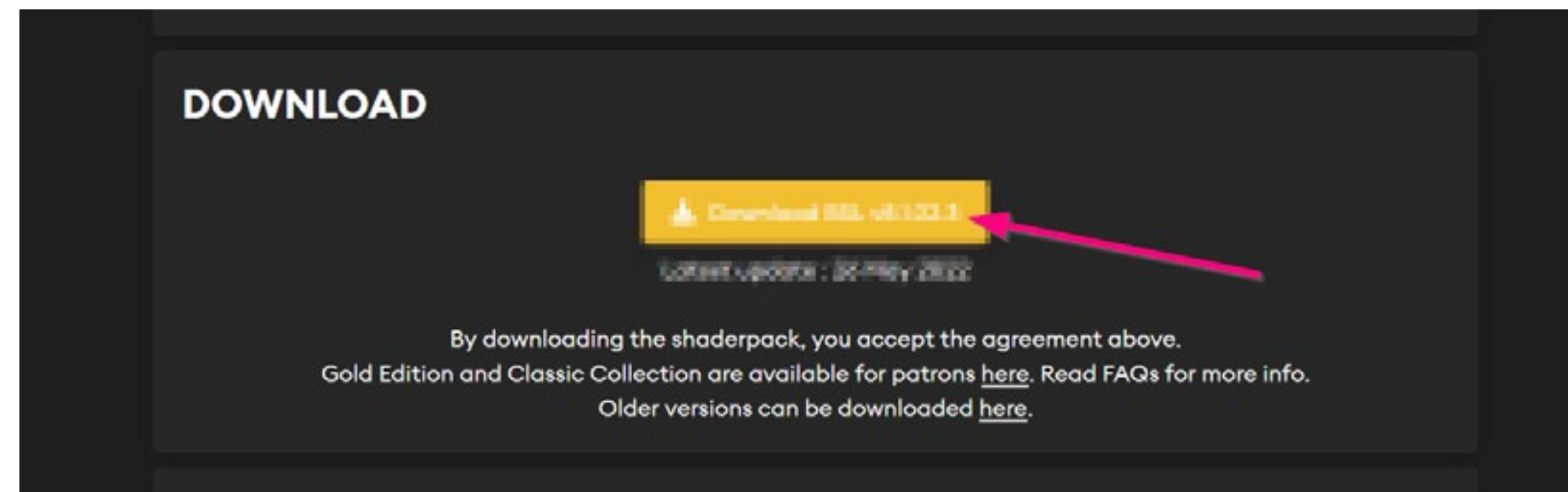
Install Optifine 1.19 HD U H8 to the default location:

C:\Users\your_username\AppData\Roaming\.minecraft



**In order to download and install free
BSL v8.1.02.3 SHADER
please go to the official page of its creator**

<https://bitslablab.com/bslshaders/#download>

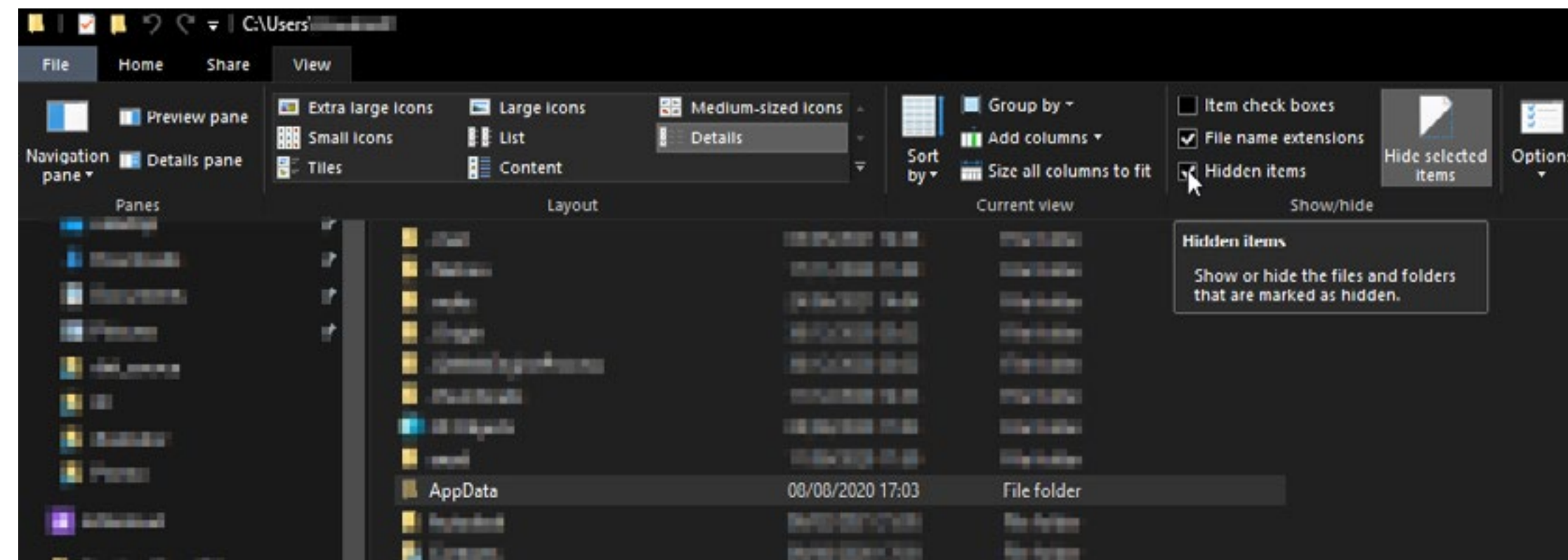


SHADER INSTALLATION

**Copy and place file BSL_v8.1.02.3.zip
into this folder**

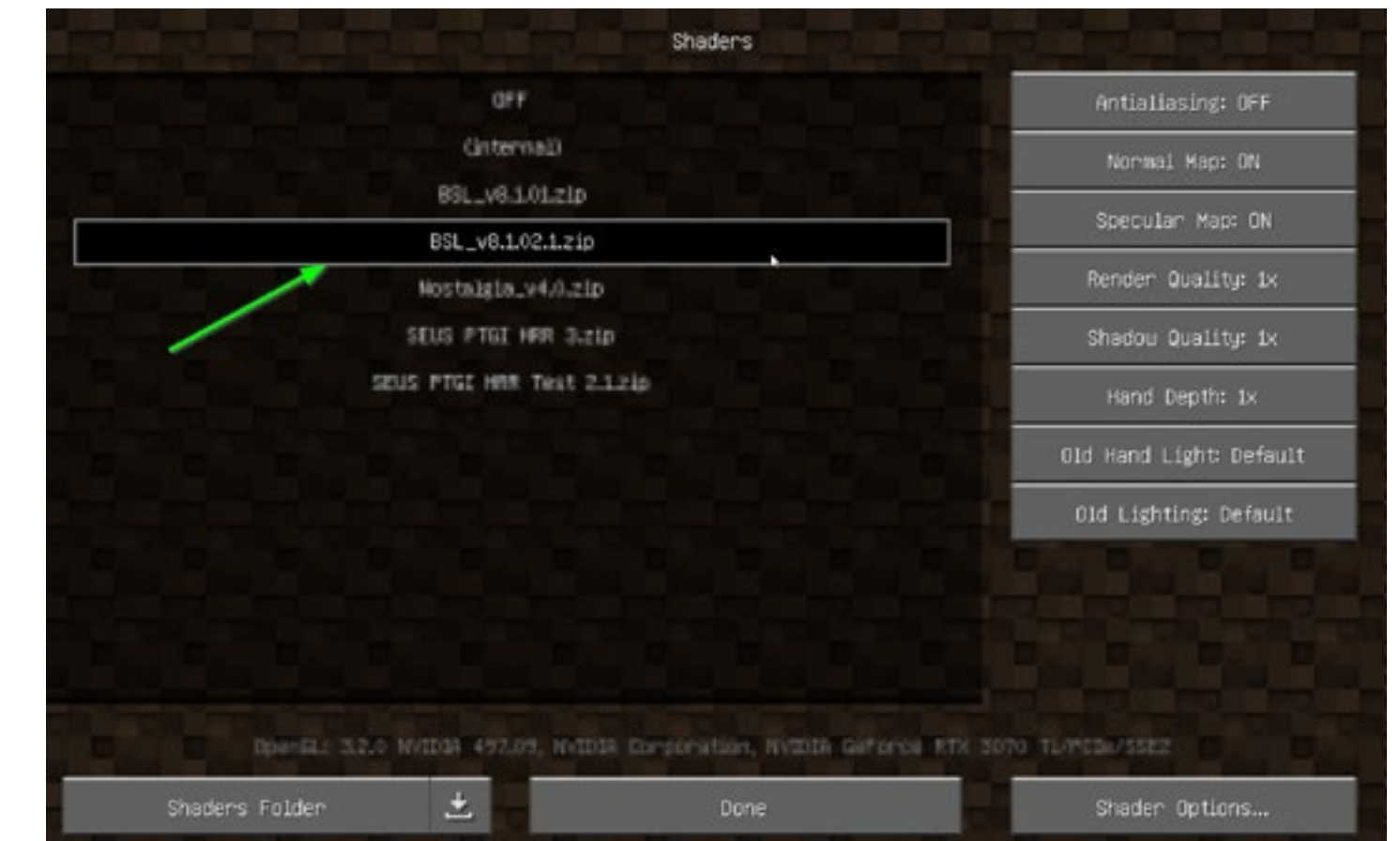
C:\Users\<your_username>\AppData\Roaming\.minecraft\shaderpacks

(folder AppData might be hidden so you need to set windows explorer to show hidden items)



If “shaderpacks” folder don’t exist yet please create a folder named “shaderpacks” inside of “.minecraft” folder

Select BSL_v8.1.02.3 shader in Minecraft



For all steps, links and video timestamps please click **SHOW MORE** in the description below.

BRIXEL INSTALLATION

Choose one of those files:

“Brixel 2.3 1024x BSL - unpack this in your .minecraft folder.zip” - for 1024x1024px texture pack

or

“Brixel 2.3 512x BSL - unpack this in your .minecraft folder.zip” - for 512x512px texture pack

or

“Brixel 2.3 256x BSL - unpack this in your .minecraft folder.zip” - for 256x256px texture pack

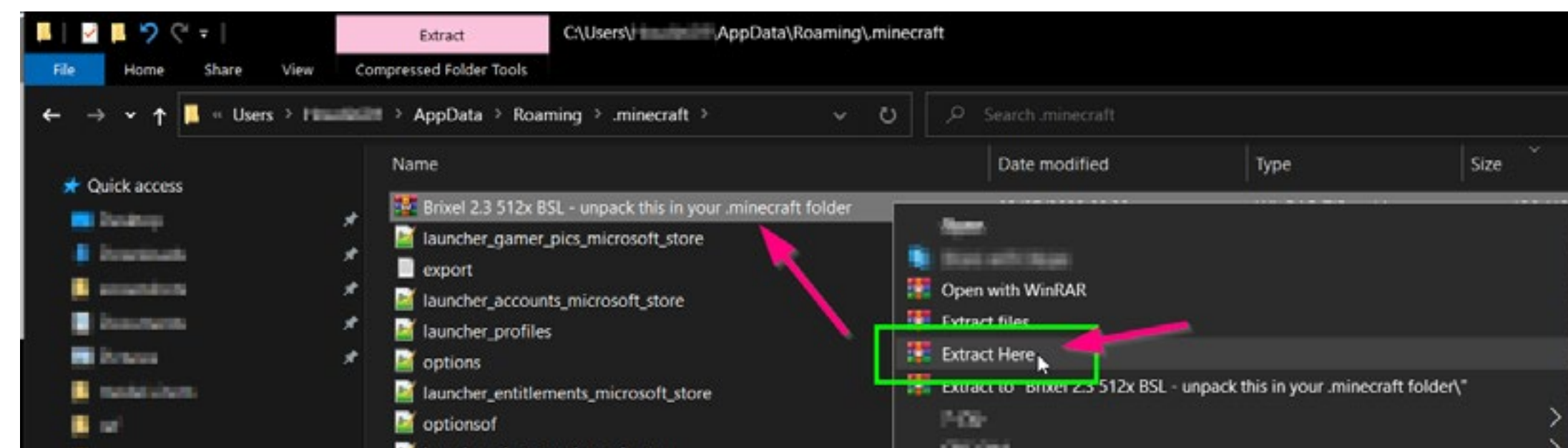
or

“Brixel 2.3 128x BSL - unpack this in your .minecraft folder.zip” - for 128x128px texture pack

Put it into your .minecraft folder :

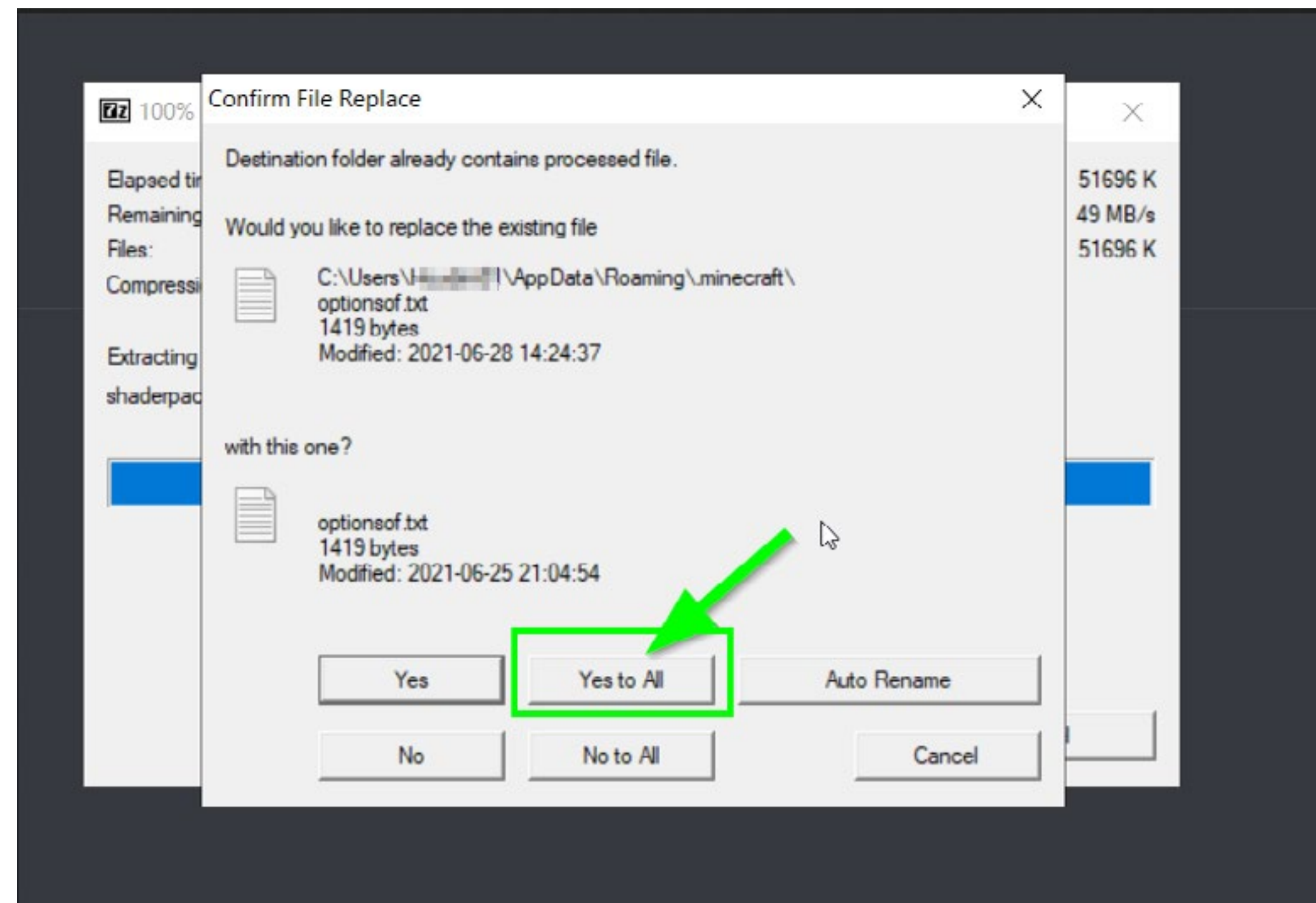
C:\Users\<your_username>\AppData\Roaming\.minecraft

Then, right-click the file and choose “extract here” the .zip file to install Brixel v2.3



For all steps, links and video timestamps please click **SHOW MORE** in the description below.

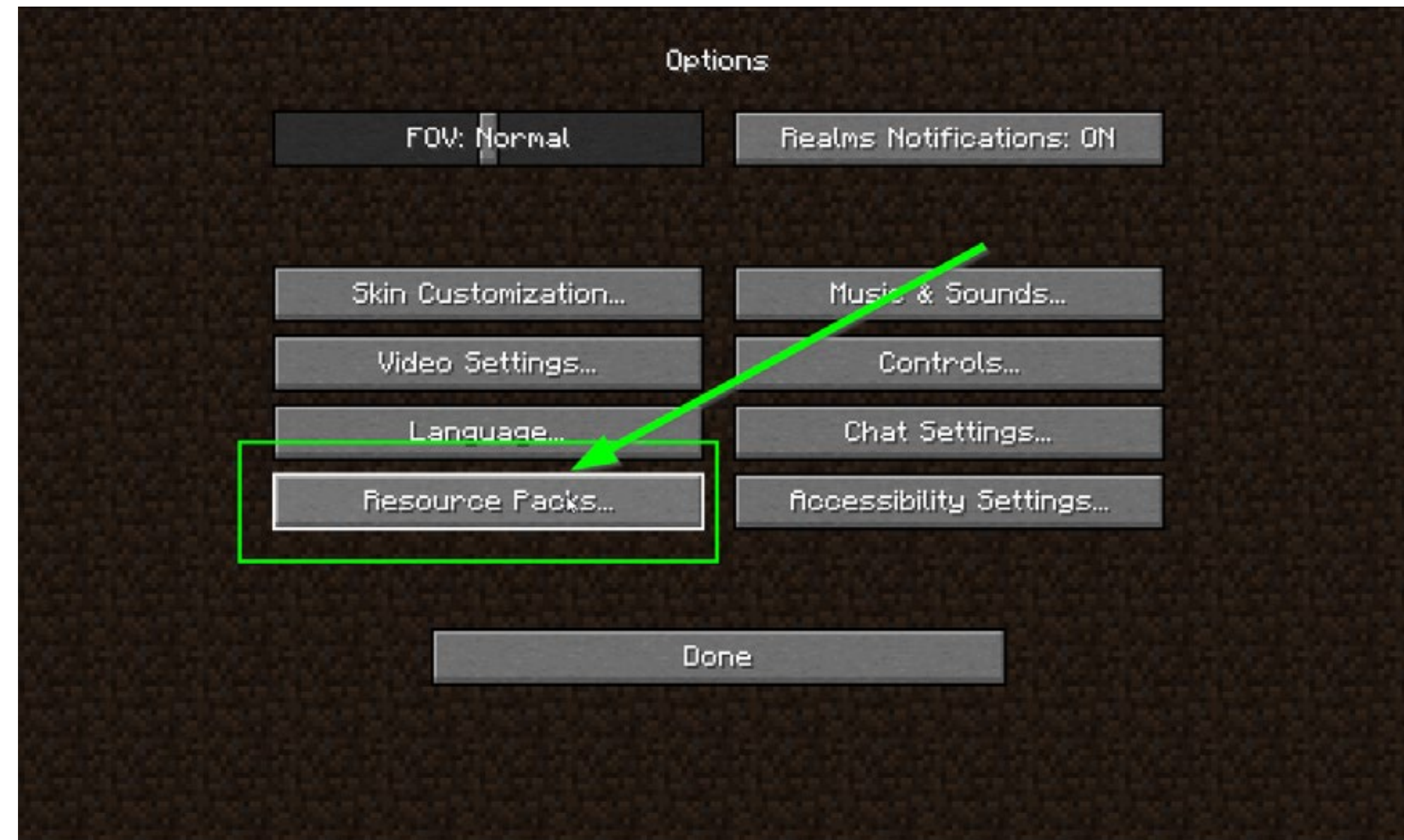
When asked about overwriting existing files, choose “Yes to all”



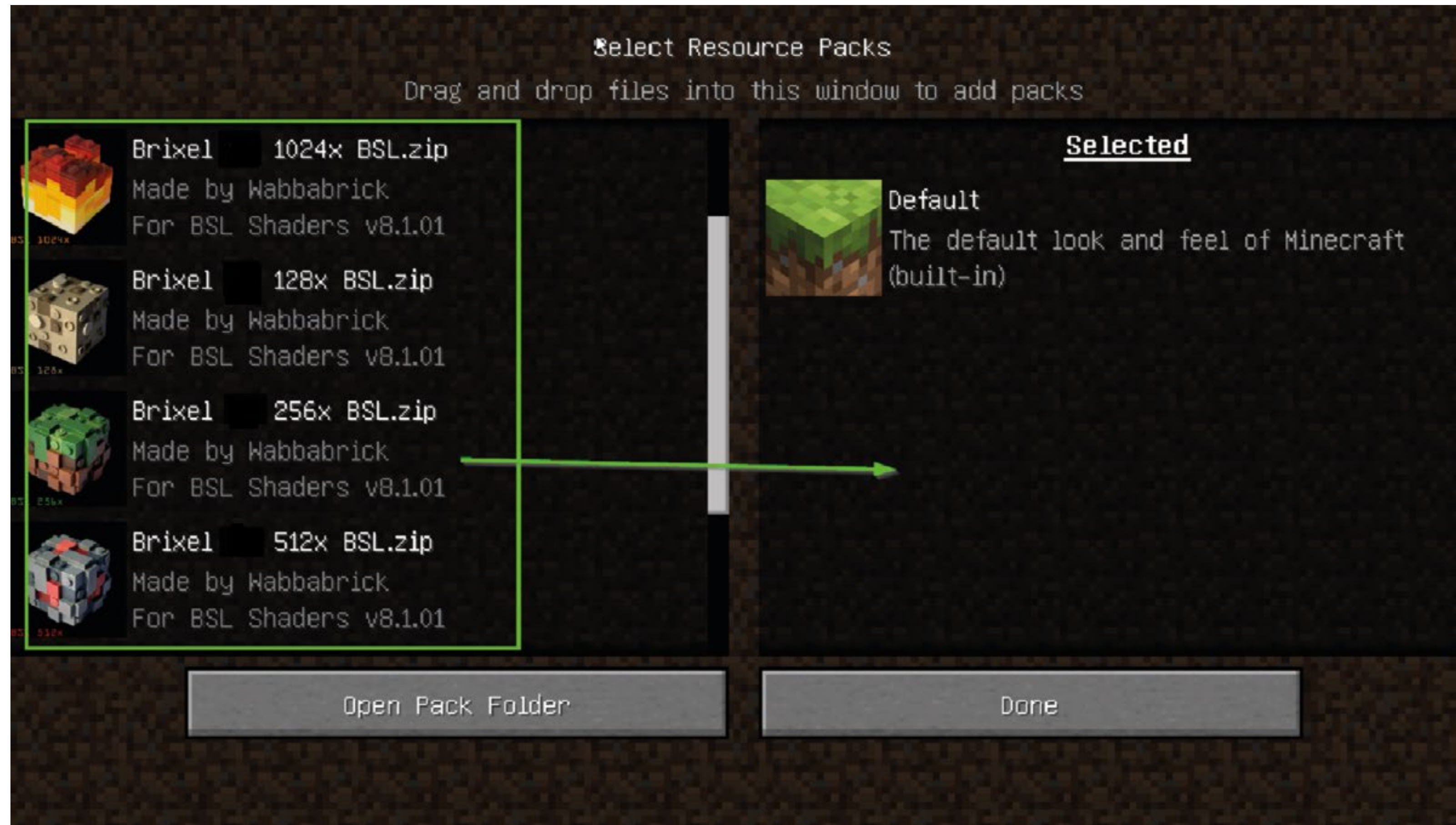
Note: this will overwrite your personal Optifine and shader settings to ensure that Brixel will run properly.

LOADING BRIXEL v2.3 BSL resource pack

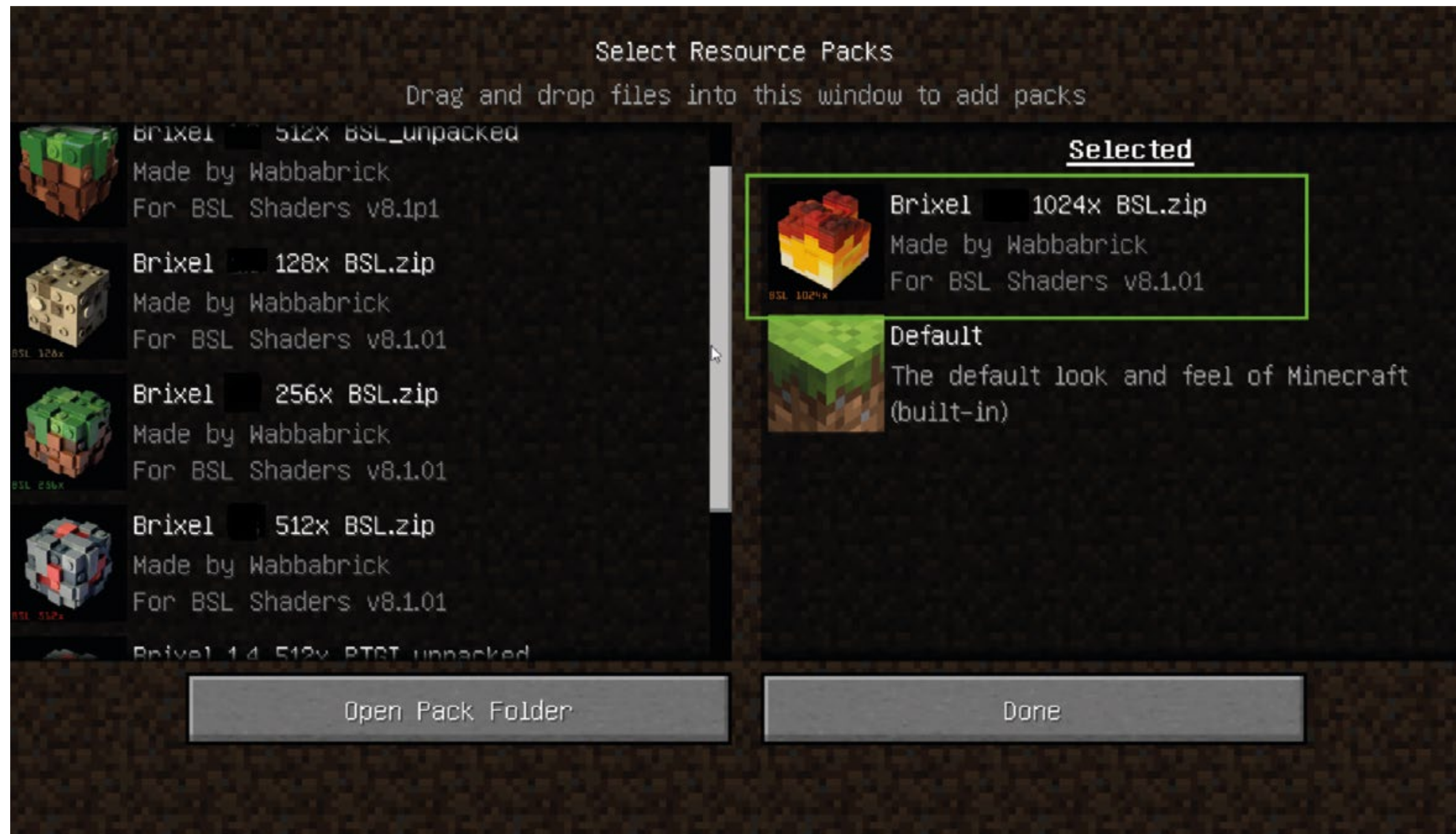




Select the Brixe1 2.3 pack with your chosen resolution:



In this example 1024x resolution was selected



For all steps, links and video timestamps please click **SHOW MORE** in the description below.

Brixel v 2.3 will load



**Now you can enjoy Brixel v 2.3
Thanks for watching !**



If you have more questions about installation please contact our support via our Discord server.

For all steps, links and video timestamps please click **SHOW MORE** in the description below.